



STARLINK

# XPAND PORTFOLIO

SERVICE OVERVIEW



# XPAND PORTFOLIO

---

## STRALINK

220 Mbps  
Low-latency  
Compact terminal

## SUPPORT

## RELIABLE BACK UP

## NETWORK MANAGEMENT

## VALUE-ADDED SERVICES & APPS

# COVERAGE

---



**GLOBAL**



**REGIONAL**



# BACK-UP

EPOWERING BUSINESS CONTINUITY



Resilient L-band connectivity



Optimised apps for corporate use even over low bandwidth



Continuous crew welfare



Full visibility of the remote network



### THALES VESSELINK 200

Thales VesseLINK 200 delivers reliable satellite communication services at 176 Kbps to power core voice and data requirements at sea.

- Global coverage
- Simple, adaptable, and robust
- Durable to harsh weather conditions at sea



### SAILOR 500 FBB

SAILOR 500 FleetBroadBand meets the critical need for broadband access of maritime & offshore professionals. It delivers bandwidth-hungry applications & 9 voice lines.

- Simultaneous voice & data broadband
- Always-on connection
- Compact design



### THURAYA ORION IP

Specially designed for harsh maritime environments, Thuraya Orion IP provides affordable onboard broadband access. It is perfect for merchant, government or leisure users.

- Up to 444 Kbps (standard)
- Suite of value-added services
- Competitive pricing plans



### THURAYA MARINESTAR

Thuraya MarineStar provides voice communications, constant tracking & monitoring over busy sea routes & fishing hotspots. It can be customised for specific operational needs.

- 2-in-1 lines for corporate & crew comms
- Satellite connectivity at cost of GSM service
- Back-up to radio & GSM



# ONEGATE | INTRODUCTION

---



OneGate is a future-ready network management solution designed to operate in dual GSM/satcom mode.

PREVIEW



# ONEGATE | KEY FEATURES

---

## ADVANCED PABX

- Unlimited number of extensions
- Possibility to have free of charge local calls
- Competitive rates for outgoing calls
- Voice calls via a dedicated smartphone app
- Multiple calling policies supported

## INTEGRATED LTE FAILOVER

- Integrated LTE modem to reduce costs
- Seamless failover between LTE and satellite links

## Advanced Virtualisation Platform

- Multiple pre-approved VMs already available
- Possibility to activate any available service anytime
- Cross-platform compatibility with Linux and Windows machines

## Advanced User Management

- Advanced voucher system with multiple options
- Advanced WiFi Controller with full visibility
- Advanced reporting available with cyber security option

# ONEGATE | DASHBOARD



Full Visibility over Satcom Links



Bandwidth Usage History



Advanced Filtration Management



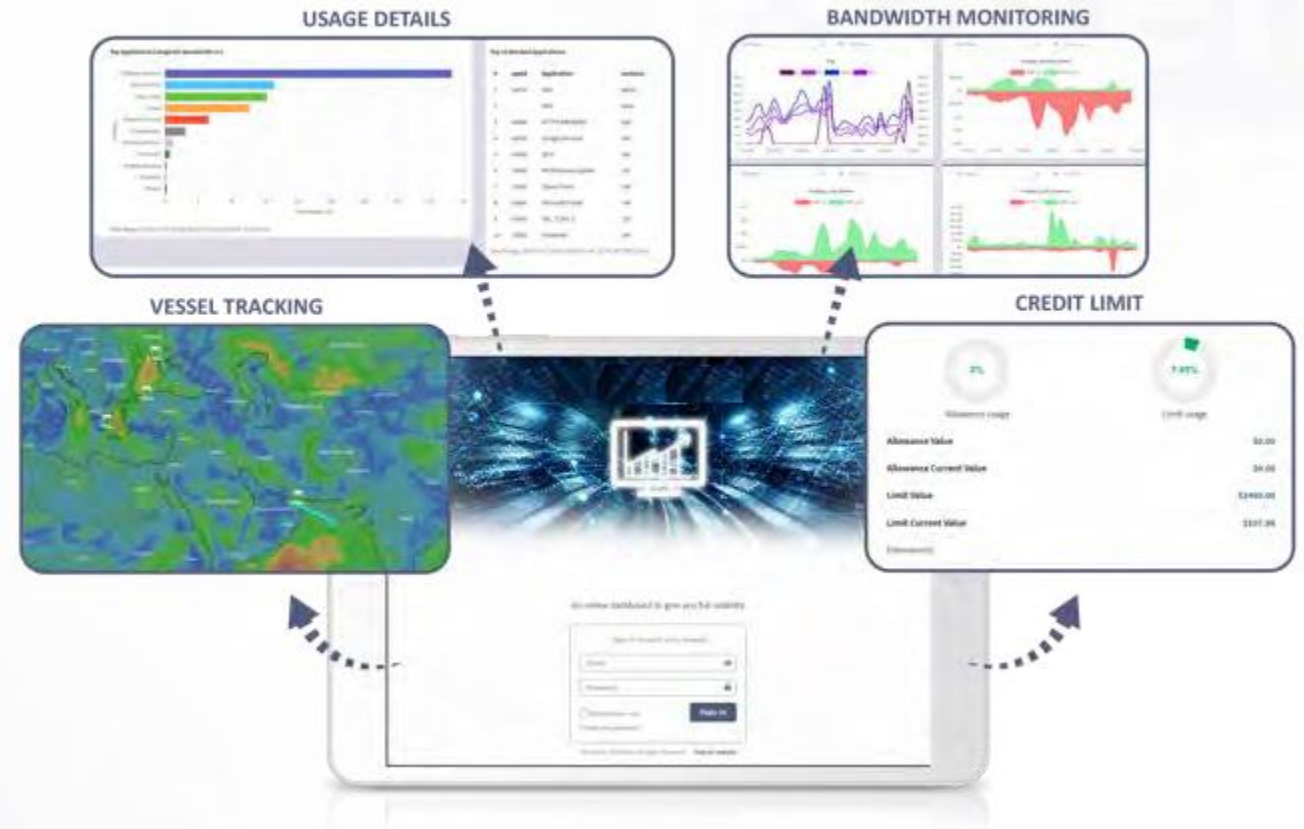
Usage Details Report



Credit Limit Management



Vouchers Monitoring





# SUPPORT

---



## 24x7 TECHNICAL SUPPORT

We dedicated 24x7 support team ensures the optimum use and control of voice and data satellite connectivity services. The team delivers the highest quality of service in many languages across the globe via six channels of support.



## SERVICING ALL MAJOR PORTS

With a wide network of partners all over the globe, assists with global logistics and maintenance in all major ports. From installation to customer training, our team will ensure that you enjoy the best quality of service over your satcom terminal.



## MANAGED SERVICES

Managed Services offer an unparalleled level of transparency and flexibility for the complete satellite communications lifecycle. We support your critical operations with our rapid logistics and comprehensive maintenance.





STARLINK

# ADD-ONS

SERVICE OVERVIEW



# OPTISHIELD | CYBER SECURITY

---

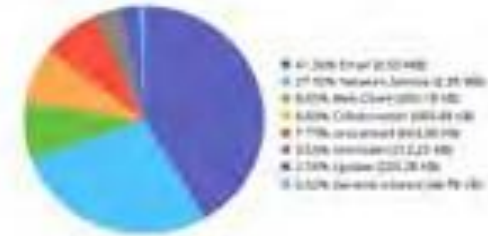


- Advanced filtration
- Reliable network with controlled access
- Robust, compact, adaptable, and easy to install
- Advanced SD-WAN rules when using different WAN connections
- Includes basic monitoring:
  - Current status of the link
  - Bandwidth usage
  - Current monthly consumption
  - Advanced reports and monitoring
  - Tailored filtration profiles

# OPTISHIELD | CYBER SECURITY

- Advanced filtration with different rules per network
- Application identification and categories classification (WhatsApp, etc.)
- Advanced usage reports to provide full visibility of the network traffic
- Advanced network security
- Intrusion detection & gateway antivirus on-site
- End-point security with remote configuration
- Advanced filters designed per WAN link
- Full vulnerability monitoring from central shore dashboard

Top Application Categories Bandwidth



Top Applications by Bandwidth





# NEW LEVEL OF CREW WELFARE

---

CREW VOUCHERS HAVE NEVER  
BEEN SO GENEROUS!

Choose between

**5 GB**

**10 GB**

**25 GB**

and pay on par with GSM

# NEW LEVEL OF CREW WELFARE

Competition for tomorrow's workforce is fierce. Connectivity is the major factor in talent attraction and crew retention.

Offer crew vouchers on par with a GSM subscription (up to 20 GB).



## CREW BENEFITS

### LINK TO FAMILIES

Videoconferencing with family and loved ones via personal gadgets.

### ACTIVE CITIZEN

Access to private and government services while at sea (bank services, online payments, etc.) and a gateway to world news in real-time.

### QUALITATIVE LEISURE

Support for myriad online activities that enhance well-being: streaming videos, playing games, e-learning, and more.



## CORPORATE BENEFITS

### CSR & TALENT MANAGEMENT

Free credits are offered to the crew as a part of the allowance. Retain current workforce and attract new talent by offering better working conditions

### CREW TRAINING

Upskilling your team has never been easier and more cost-effective. Enable online libraries, roll-out testing, host live training, and more.

### INSTANT ROI

Shared access to the network will generate returns to compensate for the investment.



# OPTIMISED APPLICATIONS

Optimised applications deliver the same quality of service using a fraction of the data as compared to popular software. Enjoy the benefits of digitalisation while keeping your costs at bay. Moreover, all applications remain fully operational even over L-band back-up, guaranteeing business continuity for your vessel.



Flawless messaging  
& videoconferencing  
in an ultra-low bandwidth  
environment



Hands-free video-  
streaming solution  
with voice control  
functionality



Video surveillance software  
with advanced remote  
access



EVEN OVER BACK-UP

# ONEASSIST

Remote Maintenance

---

OneAssist is a hands-free video-streaming solution with voice control functionality.

- **VIDEO STREAMING:** enables streaming of videos and shares snapshots in real-time
- **LOW BANDWIDTH:** operates in ultra-low bandwidth environments as low as 40Kbps
- **COST-EFFECTIVE:** saves customers time and money by virtually bringing a subject matter expert to the source of the problem
- **SECURE:** encrypted end-to-end (AES 256 encryption)

**Ideal for remote technical support, inspections, and equipment commissioning in the remotest of locations**





**EVEN OVER BACK-UP**

# ONETEAM

Messaging & Videoconferencing

OneTeam is specially designed to offer connectivity in areas with limited or no GSM even over extremely limited bandwidth.

- **OPTIMISED VIDEOCONFERENCING:** for operations in areas with limited/no GSM coverage
- **ADVANCED VISIBILITY:** experts from HQ and vendors may examine the issue first-hand via video stream and guide remote teams in real-time
- **FILE EXCHANGE:** support files (from schematics and drawings to technical manuals and operational guides) can be transferred via chat, assisting remote teams to fix a problem/apply an update as and when required without the need to send a technician onsite



**EVEN OVER BACK-UP**

# ONEMONITOR

VIDEO SURVEILLANCE

---

OneMonitor is a software-controlled CCTV system, which can be remotely controlled and accessed via a managed bandwidth communication dashboard.

## **CONTINUOUS MONITORING OF YOUR ASSETS AND TEAM MEMEBERS IN REAL-TIME REGARDLESS OF VSAT AVAILABILITY**

- **COST-EFFECTIVE:** reduced need for an onsite team due to remote monitoring capability
- **SECURE:** based on AES 256-bit encryption, all the communication between remote sites and the monitoring application is secure
- **EASY INTEGRATION:** can be integrated with the existing CCTV system; compatible with most cellular and satellite communication platforms





STARLINK

# USE CASES

SERVICE OVERVIEW



# MERCHANT VESSELS & CREW COMMUNICATIONS

---

Increase operation efficiency, boost crew welfare, and secure business continuity.

Our solution will support your CSR programme, ensuring a favourable environment for talent attraction and retention conditions.





#satelliteitup

#satelliteitup

#satelliteitup

#satelliteitup



## YACHTING

---

Enjoy your leisure time and extend generous hospitality to your guests.

We will equip your vessel with a captive portal to generate data vouchers, share trip updates, and much more.

Feel free to browse the net. We will take care of your data privacy at all times.



# OIL RIGS & OFFSHORE VESSELS

---

Enable informed decision-making with total visibility of your fleet and valuable assets.

Manage subscriptions and keep an eye on the network status at all times. Benefit from remote maintenance and video surveillance, fully operational even over back-up.





#satelliteitup  
#satelliteitup  
#satelliteitup  
#satelliteitup



## FERRIES

---

Enjoy stable high-speed connectivity throughout your trip. Use corporate apps, make video calls, and share big files on-the-go.

Access a broad menu of onboard entertainment services such as streaming apps, online gaming, and much more.





STARLINK

# XPAND PORTFOLIO

Subscriptions



# XPAND MARITIME STANDARD

1 TB

## STANDARD REGIONAL

Airtime: Starlink, 1TB monthly allowance

Back-Up: Thuraya, 20 GB yearly back-up data

Back-Up: Thuraya, 50 minutes monthly + free incoming calls + crew calling feature

VAS (Captive portal, voucher system)

## HARDWARE PURCHASE

Starlink Flat High Performance with 25 m cable

OneGate

Back-up: Thuraya Orion IP + MarineStar

Unifi 8/16/24 ports POE switch ; 1 unit

Unifi AP ; 1 units

## STANDARD GLOBAL

Airtime: Starlink, 1TB monthly allowance

Back-Up: Iridium VSAT companion subscription (300 MB monthly)

VAS (Captive portal, voucher system)

## HARWARE PRICE

Starlink Flat High Performance

OneGate

VesselLink

Unifi 8/16/24 ports POE switch ; 1 unit

Unifi AP ; 4 units

# XPAND MARITIME STANDARD

50 GB

## STANDARD REGIONAL

Airtime: Starlink, 50 GB monthly allowance

Back-Up: Thuraya, 20 GB yearly back-up data

Back-Up: Thuraya, 50 minutes monthly + free incoming calls + crew calling feature

VAS (Captive portal, voucher system)

## STANDARD GLOBAL

Airtime: Starlink, 50 GB monthly allowance

Back-Up: Iridium VSAT companion subscription (300 MB monthly)

VAS (Captive portal, voucher system)

## HARDWARE PRICE

Starlink Flat High Performance with 25 m cable

OneGate

Back-up: Thuraya Orion IP + MarineStar

Unifi 8/16/24 ports POE switch ; 1 unit

Unifi AP ; 1 unit

## HARWARE PRICE

Starlink Flat High Performance with 25 m cable

OneGate

Vessellink

Unifi 8/16/24 ports POE switch

Unifi AP ; 1 units



# XPAND MARITIME STANDARD

100 GB

## STANDARD REGIONAL

Airtime: Starlink, 100 GB monthly allowance

Back-Up: Thuraya, 100 mins voice data

VAS (Captive portal, voucher system),

One Mail Pro

## STANDARD GLOBAL

Airtime: Starlink, 100 GB monthly allowance

Back-Up: Iridium VSAT companion subscription (300 MB monthly)

VAS (Captive portal, voucher system)

One Mail Pro

## HARDWARE PRICE

2 x Starlink Flat High Performance with 25 meter cable

OneGate

MarineStar

Unifi 8/16/24 ports POE switch ; 1 unit

Unifi AP ; 1 units

## HARWARE PRICE

2x Starlink Flat High Performance with 25 meter cable

OneGate

VesselLink

Unifi 8/16/24 ports POE switch ; 1 unit

Unifi AP ; 4 units

